

[SPSF] Presale:

## Driver Japan Twelve

January 5, 2023

This information is published by S&P Global SF Japan Inc. S&P Global SF Japan Inc. is a registered credit rating agency under Japan's Financial Instruments and Exchange Act (FIEA) but is not registered as a Nationally Recognized Statistical Rating Organization (NRSRO) under U.S. laws. Therefore the credit ratings assigned by S&P Global SF Japan Inc. are Registered Credit Ratings under FIEA but are not Credit Ratings issued by an NRSRO under U.S. laws.

**PRIMARY CREDIT ANALYST**

**Yoshitaka Matsuda**  
Tokyo  
+ 81 3 4550 8232  
yoshitaka.matsuda  
@spglobal.com

**SECONDARY CONTACT**

**Toshiaki Shimizu**  
Tokyo  
+ 81 3 4550 8302  
toshiaki.shimizu  
@spglobal.com

### ¥40 Billion Beneficial Interests And ABL Due June 2031

#### Preliminary Ratings As Of Jan. 5, 2023

Class	Preliminary amount (bil. ¥)*	Preliminary rating	Interest rate	Legal final maturity date	Overcollateralization ratio (%)§
Beneficial interests 2	20.0	AAA (sf)	Fixed	June 30, 2031	6.5
ABL 2	20.0	AAA (sf)	Fixed	June 30, 2031	6.5

This presale report is based on information as of Jan. 5, 2023. The ratings shown are preliminary. Subsequent information may result in the assignment of final ratings that differ from the preliminary ratings. Accordingly, the preliminary ratings should not be construed as evidence of final ratings. This report does not constitute a recommendation to buy, hold, or sell securities. \*The aggregate issue amount and the breakdown of the issue amounts of the beneficial interests 2 and ABL 2 are tentative and may be changed by the closing date. §We define the overcollateralization ratio as: 1-(A+B)/(C-D-E); A: the rated obligations and equally ranked obligations; B: prior obligations to the rated obligations; C: underlying assets (including cash); D: liquidity reserves; E: obligations, except for senior, mezzanine, or subordinate obligations (seller's interest, etc.) ABL--Asset-backed loan.

#### Profile

Expected closing date	Feb. 27, 2023
Collateral	Auto loan receivables
Originator/Trustor 1/Servicer	Volkswagen Financial Services Japan Ltd.
Trustee (Trusts 1 and 2)	Sanne Group Japan Trust Co. Ltd.
Collection account	MUFG Bank Ltd. (to be determined)
Arrangers	BNP Paribas Securities (Japan) Ltd. and SMBC Nikko Securities Inc.
ABL 1 Lender/Trustor 2	SMBC Nikko Securities Inc.
Underwriter	BNP Paribas Securities (Japan) Ltd.

## Profile (cont.)

Subservicers/Guarantors of auto loan receivables SMBC Finance Service Co. Ltd. and  
JACCS Co. Ltd.

## Credit Support

Overcollateralization	(1) Credit support provided through overcollateralization mitigates the credit risk of the beneficial interests and ABLs. (2) Principal payments in cash for the subordinate beneficial interest will not be made until credit enhancement reaches the target level. Accordingly, credit enhancement for the ABL 1 is set to rise to the target level as seasoning increases. After credit enhancement reaches the target level, payments convert to pro rata on the ABL 1 and subordinate beneficial interest. We incorporate an impact of pro rata-basis redemption in our cash flow analysis. (3) During the one-year revolving period, the amount of the subordinate beneficial interest that serves as credit enhancement increases if the originator entrusts additional loans.
Early amortization triggers	Early amortization triggers would mitigate the potential adverse impact on redemption of ABL 1.

## Transaction Structure

Servicing risk	A backup servicer will not be appointed at the closing date. If certain credit events stipulated in trust agreements occur, trustee 1 will appoint a backup servicer and, in certain cases, have that backup servicer take over servicing operations from the initial servicer. This structure mitigates the risk of servicing activities being disrupted for an extended period.
Liquidity risk	A cash reserve to be funded at closing for four months' worth of interest payments and transaction expenses mitigates liquidity risk. In addition, this cash reserve is nonamortizing during the transaction term and ultimately serves as credit support.
Commingling risk	Advance payment collections by the servicer and overcollateralization mitigate commingling risk.
Counterparty risk	Under the transaction documents, qualified banks have a short-term credit rating of 'A-1' or above. In the future, if the bank of the account is no longer eligible as a qualified bank, the account will be transferred within 30 days to a financial institution that is eligible.

## Assumed Scenarios

(%)	Base scenario	'AAA' stress scenario
Cumulative default rate	0.8	4.0
Losses on balloon payments	0.0	7.0
Monthly prepayment rate	1.0	0.05 to 3.0
Cumulative default rate considering losses on balloon payments	0.8	6.9
Excess spread	--	0.9
Break-even overcollateralization level	--	6.0

## Rationale

S&P Global SF Japan Inc. (SPSF) today said that it has assigned its preliminary 'AAA (sf)' ratings to Driver Japan twelve's beneficial interests 2 and its corresponding asset-backed loan (ABL 2) under the transaction. Both are due June 2031 and worth a combined ¥40.0 billion (see tables above).

## [SPSF] Presale: Driver Japan Twelve

The collateral comprises Japanese auto loan receivables that Volkswagen Financial Services Japan Ltd. (VWFSJ) originated.

The preliminary ratings reflect our views primarily on the following.

- We assume a cumulative default rate on the initial receivables balance of 0.8% under our base scenario during the transaction term, based on the characteristics of and historical data on the underlying auto loan assets, performance data on past series, and our overall outlook for the future performance of Japanese auto loan assets.
- We also assume a cumulative default rate of 6.9% under our 'AAA' stress scenario, considering that the underlying assets include auto loans with balloon payments (such loans have equal payments during the loan's life except for the last "balloon" payment, which is significantly larger).
- Credit support, provided through overcollateralization, mitigates the credit risk of the underlying assets.
- Credit support available to the beneficial interests 2 and ABL 2 withstood our 'AAA' stress scenario after analyzing the cash flow stressed on all the parameters, including default rates.
- Advance payment collections by the transaction's servicer mitigate commingling risk.
- Cash reserves in order to provide liquidity support for interest payments on rated classes and transaction costs will be funded on its closing date.
- Initial servicer VWFSJ, and subservicers JACCS Co. Ltd. and SMBC Finance Service Co. Ltd. (SMBC Finance) will be able to fulfill their roles in the transaction.
- As soon as the overcollateralization ratio has reached a certain level after a revolving period, the principal will be redeemed on a pro rata basis. The transaction's payment structure will convert principal payments to a monthly pass-through turbo structure if these early amortization triggers hit.
- The transaction's legal structure establishes that the entrustment of the underlying assets will not be considered as security interest and thus the underlying assets will not be considered as part of the originator's property in the event of its bankruptcy.

Information that we obtain hereafter may lead us to assign final ratings that differ from the preliminary ratings. We will assign final ratings after the issue amounts and terms of the senior beneficial interests 2 and ABL 2 are finalized, and after we complete our analysis of such factors as the pool of underlying assets, the transaction's structure, related documents, and legal opinions.

## Environmental, Social, And Governance (ESG)

Our rating analysis considers a transaction's potential exposure to ESG credit factors (see "ESG Industry Report Card: Auto Asset-Backed Securities," March 31, 2021).

The transaction's above-average exposure to environmental credit factors, given the collateral pool primarily comprises vehicles with internal combustion engines, is in line with our sector benchmark. While adoption of electric vehicles and future regulation could in time lower the value of internal combustion engine vehicles, we believe our current approach to evaluating recovery is appropriate, given the relatively short expected life of the transaction.

The transaction's exposure to social credit factors is average, in line with the sector benchmark.

**[SPSF] Presale: Driver Japan Twelve**

Social risks for the auto sector could become more relevant over the longer term if consumer preferences change regarding vehicle ownership and usage.

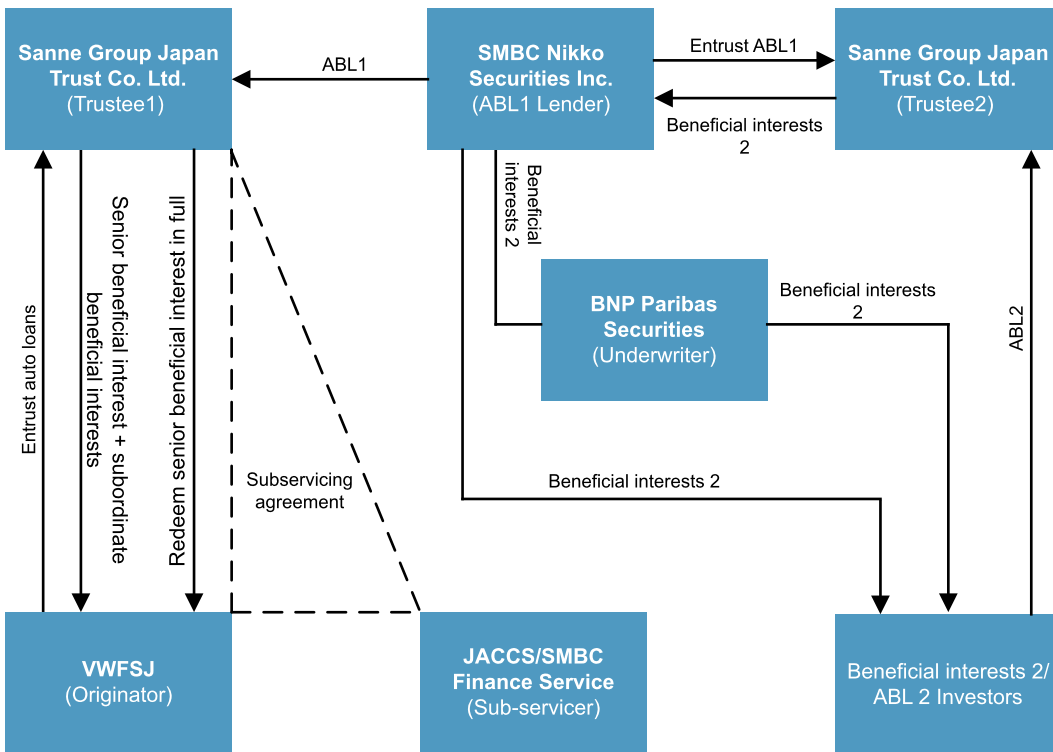
The transaction's exposure to governance credit factors is below average, in line with the sector benchmark. Given the nature of structured finance transactions, most have relatively strong governance frameworks that typically restrict what activities the special-purpose entity can undertake. We consider the risk-management and governance practices in place to be consistent with industry standards and our benchmark expectations.

**Transaction Structure**

The ¥40 billion beneficial interests 2 and ABL 2 are backed by a pool of auto loan receivables that VWFSJ originated. The transaction structure is shown below (see chart 1).

Chart 1

**Driver Japan Twelve  
Transaction structure**



Copyright © 2023 by Standard & Poor's Financial Services LLC. All rights reserved.

1. The originator will entrust a pool of auto loan receivables and cash with Sanne Group Japan Trust Co. Ltd. (Sanne Group Japan Trust; trustee 1). At the entrustment, the lien on the receivables will be perfected against third-party claims via registration of the transfer of the receivables, pursuant to regulations for perfection under Japan's Special Perfection Law. Perfection against obligor claims will be suspended unless certain events, such as a servicer replacement, occur. The originator will receive the senior beneficial interest and subordinate beneficial interest. Upon

## [SPSF] Presale: Driver Japan Twelve

entrustment of the auto loans, the originator will transfer withheld ownership of the relevant purchased vehicles to trustee 1. However, withheld ownership will not be registered in trustee 1's name.

2. Trustee 1 will raise funds from SMBC Nikko Securities Inc. (ABL 1 Lender). Trustee 1 will then redeem the senior beneficial interest in full on the trust commencement date. The originator will hold the subordinate beneficial interest for the life of the transaction.

3. The ABL 1 Lender will entrust ABL 1 with Sanne Group Japan Trust, which serves also as trustee 2. Then, BNP Paribas Securities (Japan) Ltd. as underwriter and SMBC Nikko Securities as ABL 1 Lender sell the beneficial interests 2 to investors through a private placement. Investors may also choose to lend money through ABL 2 instead of purchasing the beneficial interests 2. At the transfer of the beneficial interests 2, their assignment will be perfected against obligor and third-party claims following trustee 2's written consent to a notarially certified date, pursuant to Article 94 of the Trust Law.

4. During the revolving period, the originator may entrust further auto loan receivables with trustee 1 if funds are available.

5. The originator will continue to collect the receivables with the subservicers.

The ABL 1, beneficial interests 2, and ABL 2 carry fixed rates of interest and dividend. Trustee 1 is scheduled to pay interest and principal on ABL 1 from its account to a separate account for trustee 2 on each monthly trust calculation date. After the one-year revolving period, trustee 1 will redeem ABL 1 sequentially until overcollateralization reaches 11.5%--which is 5.0 percentage points higher than the level at closing. As soon as overcollateralization has reached 11.5%, trustee 1 will redeem the principal on ABL 1 and the subordinate beneficial interest pro rata.

Trustee 2 will use collections from ABL 1 to pay interest and principal on the beneficial interests 2 and ABL 2 via a pass-through structure after deducting its trustee fee. The payment priority of the beneficial interests 2 and ABL 2 is pari passu throughout the transaction term.

In this transaction, a backup servicer will not be appointed at closing. In the event that certain credit events stipulated in trust agreements occur, trustee 1 will appoint a backup servicer and, in certain cases, have that backup servicer take over servicing operations from the initial servicer.

## Cash Flow

### Delivery of collections

Each monthly collection period of this transaction starts on the 11th of each month and ends on the 10th of the following month. JACCS will collect payments from the receivables it subservices on behalf of VWFSJ through automatic withdrawal from the obligors' accounts on the 27th of each month. SMBC Finance will collect the same on the 26th of each month. JACCS and SMBC Finance, as the guarantors, will transfer the full amount of scheduled collected proceeds--regardless of the amount of actual collected proceeds--to VWFSJ on the same respective days. VWFSJ makes advance payment to trustee 1 for one month of scheduled collections on the fourth business day before the 28th of the month when automatic withdrawal occurs. It reimburses the advance payment four business days before the 28th of the following month. In this transaction, the modified following business day convention will apply to the 28th of each month.

Trustee 1 will distribute interest and principal on ABL 1 one business day before the 28th of each month. Trustee 2 will distribute interest and principal on the beneficial interests 2 and ABL 2 on

the 28th of the same month.

## Revolving period

During the revolving period, VWFSJ can entrust additional auto loan receivables with trustee 1. The revolving period starts on the trust commencement date and ends on March 10, 2024, at the latest. It will end earlier if and when any of the early amortization events described below occur.

During the revolving period, trustee 1 will use interest and principal collected from the auto loan receivables less an amount equivalent to the sum of trustee fees, servicing fees, and other expenses to pay interest on ABL 1. Then, trustee 1 will retain excess cash collected from the asset pool (retained cash) in a trust. However, if VWFSJ entrusts additional auto loan receivables, it will receive a newly issued senior beneficial interest and subordinate beneficial interest and will use the retained cash to redeem the new senior beneficial interest. As soon as overcollateralization has reached 8.5%, payment to the subordinate beneficial interest will start using the excess overcollateralization or earnings.

## Repayment of beneficial interests and ABL

After the revolving period has ended, trustee 1 will use interest and principal collected from the auto loan receivables, less an amount equivalent to the sum of trustee fees, servicing fees, and other expenses, to pay interest on ABL 1. Then ABL 1 will redeem sequentially until overcollateralization reaches 11.5%. As soon as overcollateralization has reached 11.5%, trustee 1 will transfer principal payments received pro rata to ABL 1 and the subordinate beneficial interest. The percentage of overcollateralization for ABL 1 will remain constant, as long as the portfolio's performance stays within the following predetermined boundaries:

- The cumulative gross loss ratio exceeds 0.50% during the first six months after closing, 0.80% between month six and month 15, or 1.15% between month 15 and month 24, and trustee 1 therefore repays ABL 1 sequentially until overcollateralization reaches 17.0% for ABL 1.
- Additional credit enhancement reaches the required level, and the repayment therefore reverts to pro rata.
- The cumulative gross loss ratio exceeds 1.6% at any time, and amortization therefore permanently switches to sequential payments.

## Discount rate

The discount rate applied to each loan (includes additional auto loans that VWFSJ may entrust during the revolving period) in Driver Japan twelve's pool is set to be the greater of: (1) a predetermined rate (which is set, based on the provisional pool, such that the cash flow from the assets covers the fixed interest rate of ABL 1, plus fees and expenses), and (2) the applicable interest rate in the relevant auto loan agreement.

## Early amortization triggers

This transaction is structured with early amortization triggers, which mitigates the potential adverse impact on redemption of ABL 1. In the early amortization period, trustee 1 repays ABL 1 sequentially. Early amortization trigger events include, but are not restricted to, the following:

## [SPSF] Presale: Driver Japan Twelve

- The cumulative gross loss ratio exceeds 1.6%;
- A servicer replacement event occurs;
- A subservicer replacement event occurs; and
- The outstanding cash amount in the trust account exceeds 10% of the portfolio volume for three consecutive months.

## Credit enhancement

Overcollateralization provides credit protection for the transaction. In addition, the structure benefits from a nonamortizing cash reserve, which serves primarily as liquidity support and ultimately as credit support. Meanwhile, advance payments by the transaction's servicer mitigate commingling risk.

## Originator

VWFSJ, established in 1990, is a subsidiary of Volkswagen Finance Overseas B. V. that in turn is controlled by Germany-based Volkswagen Financial Services AG, which car manufacturer Volkswagen AG owns. VWFSJ's primary business is to provide financing for customers of Volkswagen AG and grant credit to car dealers. These car dealers sell predominantly Volkswagen and Audi vehicles, along with those of Bentley, Lamborghini, and Ducati, in Japan. VWFSJ outsources its auto loan operations--including credit and scoring, processing contract applications, and collections--to JACCS and SMBC Finance. These two companies also provide guarantees to VWFSJ against losses from auto loans. VWFSJ had ¥371.6 billion in total assets and 68 employees as of Oct. 31, 2022.

## Subservicers

JACCS is a Japanese consumer credit company, providing shopping credit, auto loans, and credit cards to retail customers. It is an equity method affiliate of MUFG Bank Ltd.

SMBC Finance is a part of Sumitomo Mitsui Financial Group Inc.; it functions as the group's diversified financial arm. It was formed in July 2020 through the merger of Cedyne Financial Corp. and SMBC Finance. It mainly engages in credit card, credit sales, and transaction businesses.

## Collateral Description

The provisional collateral pool backing the transaction comprises 16,791 auto loans, with a total discounted principal balance of about ¥42.781 billion. Through random selection, we consider that the final pool will present a similar composition to the provisional pool presented in this report. The assets meet the major eligibility criteria listed below.

- No receivable is in default or overdue.
- The borrower has made at least two monthly payments.
- The borrower makes monthly payments via automatic withdrawal or remittance.
- The borrower makes monthly payments in equal monthly installments, and without skipped or irregular payments (except for annual or semiannual bonus payments and final balloon

**[SPSF] Presale: Driver Japan Twelve**

payments).

- The current principal outstanding balance of each receivable is greater than ¥50,000 and less than ¥10,000,000.
- The remaining number of monthly installments is no higher than 82.
- JACCS or SMBC Finance guarantees the receivables.

According to the transaction documents, receivables added to the portfolio during the revolving period need to comply with the same eligibility criteria as the receivables entrusted at closing. In addition, the portfolio's concentration in used cars and in the amount of balloon payments should not exceed certain limits during the revolving period. The concentration limit for balloon payments is 50%, that for used cars is 35%, and that for non-Volkswagen group brand cars is 5% of the total amount of loans. All limits are as of the day immediately after the trust commencement date and the additional entrustment date.

The largest single contract from an obligor represents about 0.04% of the portfolio and the top 20 loans from obligors make up 0.52% of the portfolio. The average outstanding loan balance is ¥2.55million.

Each borrower has paid at least two installments. The assets underlying this transaction comprise consumer loan contracts (81.8%) and business loan contracts (18.2%). Also, 8.8% of the loan contracts are amortizing and 91.2% incorporate a balloon feature. The share for the balloon payment amount is 36.9% of the total initial amount of all loans.

Loans have an original maturity of between six and 84 months, and the remaining terms are between one and 82 months. The securitized portfolio comprises predominantly auto loans for Volkswagen and Audi vehicles. The collateral pool will not contain auto loans for the purchase of Ducati vehicles.

The largest car dealer represented about 11.4% of the mother portfolio and the top 20 dealers comprised 54.9% of the mother portfolio as of Oct. 31, 2022.

The composition of the provisional pool of entrusted receivables is similar to that of the pools of entrusted receivables underlying past series of transactions issued by the originator. The proportion of used car loans and balloon loans has increased moderately.

Table 1 shows: attribute data of VWFSJ's entire auto loan book (the mother pool) as of Oct. 31, 2022; the provisional pool of entrusted receivables as of Nov. 10, 2022; and attribute data of the entrusted receivables pools of the past series. The mother pool consists of receivables that VWFSJ originated and JACCS or SMBC Finance guarantees. Some of the receivables in the mother pool failed to meet the eligibility criteria for the provisional pool. An overview of the loan products securitized in the Driver Japan twelve transaction also follows (see table 2).

Table 1

**Attribute Data Of Receivables Pools**

	<b>Driver Japan twelve provisional entrusted pool (as of Nov. 10, 2022)</b>	<b>Driver Japan twelve mother pool (as of Oct. 31, 2022)</b>	<b>Driver Japan eleven entrusted pool (as of Feb. 10, 2022)</b>	<b>Driver Japan ten entrusted pool (as of Feb. 10, 2021)</b>	<b>Driver Japan nine entrusted pool (as of Feb. 10, 2020)</b>	<b>Driver Japan eight entrusted pool (as of Feb. 10, 2019)</b>	<b>Driver Japan seven entrusted pool (as of Feb. 10, 2018)</b>
Country of origin	Japan	Japan	Japan	Japan	Japan	Japan	Japan



Table 1

## Attribute Data Of Receivables Pools (cont.)

	Driver Japan twelve provisional entrusted pool (as of Nov. 10, 2022)	Driver Japan twelve mother pool (as of Oct. 31, 2022)	Driver Japan eleven entrusted pool (as of Feb. 10, 2022)	Driver Japan ten entrusted pool (as of Feb. 10, 2021)	Driver Japan nine entrusted pool (as of Feb. 10, 2020)	Driver Japan eight entrusted pool (as of Feb. 10, 2019)	Driver Japan seven entrusted pool (as of Feb. 10, 2018)
Total receivables (¥)*	42,781,002,374	254,899,909,293	58,825,424,925	64,171,277,269	64,172,991,168	69,520,797,756	58,823,742,157
No. of contracts	16,791	114,208	23,576	26,193	26,586	30,362	25,466
Guarantee providers§	SMBCFS (58.2%); JACCS (41.8%)	SMBCFS (50.3%); JACCS (49.7%)	SMBCFS (55.8%); JACCS (44.2%)	SMBCFS (56.8%); JACCS (43.2%)	SMBCFS (56.7%); JACCS (43.3%)	SMBCFS (57.6%); JACCS (42.4%)	SMBCFS (58.8%); JACCS (41.2%)
Customer type	Retail (81.8%); Corporate (18.2%)	Retail (79.1%); Corporate (20.9%)	Retail (83.0%); Corporate (17.0%)	Retail (84.0%); Corporate (16.0%)	Retail (83.9%); Corporate (16.1%)	Retail (85.1%); Corporate (14.9%)	Retail (84.8%); Corporate (15.2%)
Vehicle type†	New (68.1%); Used (31.9%)	New (72.3%); Used (27.7%)	New (71.1%); Used (28.9%)	New (71.3%); Used (28.7%)	New (74.6%); Used (25.4%)	New (75.3%); Used (24.7%)	New (76.2%); Used (23.8%)
Geographic concentration	Tokyo (17.5%); Kanagawa (10.8%); Aichi (8.2%); Osaka (7.8%); Saitama (6.9%)	Tokyo (17.8%); Kanagawa (9.9%); Osaka (8.3%); Aichi (7.6%); Saitama (6.2%)	Tokyo (17.4%); Kanagawa (10.2%); Osaka (7.9%); Aichi (7.4%); Saitama (6.5%)	Tokyo (17.9%); Kanagawa (10.4%); Osaka (7.5%); Aichi (7.4%); Saitama (6.5%)	Tokyo (16.8%); Kanagawa (10.9%); Osaka (7.4%); Aichi (7.3%); Saitama (6.8%)	Tokyo (18.1%); Kanagawa (10.1%); Aichi (7.3%); Osaka (7.2%); Saitama (6.8%)	Tokyo (18.0%); Kanagawa (10.4%); Aichi (7.3%); Saitama (6.7%); Osaka (6.6%)
Average outstanding receivables size (¥)*	2,547,853	2,231,892	2,495,140	2,449,940	2,413,789	2,289,731	2,309,893
Outstanding loan size range (¥)*	50,069 to 9,984,843	6,139 to 81,989,156	50,096 to 9,993,683	50,049 to 9,999,457	50,419 to 9,996,172	51,322 to 9,987,070	50,096 to 9,976,018
Weighted-average seasoning (months)	7.6	18.0	8.5	8.8	9.1	9.3	9.6
Weighted-average remaining term (months)	41.8	33.4	41.1	41.4	40.5	39.2	38.9
Weighted-average interest rate (%)	2.34	2.23‡	2.26‡	2.14‡	2.27‡	2.32‡	2.12‡
Asset redemption profile	Amortizing loans (8.8%); balloon loans (91.2%); balloon payment share (36.9%)	Amortizing loans (6.1%); balloon loans (93.9%); balloon payment share (45.3%)	Amortizing loans (7.7%); balloon loans (92.3%); balloon payment share (37.8%)	Amortizing loans (7.2%); balloon loans (92.8%); balloon payment share (36.4%)	Amortizing loans (8.7%); balloon loans (91.3%); balloon payment share (36.4%)	Amortizing loans (10.9%); balloon loans (89.1%); balloon payment share (37.7%)	Amortizing loans (10.6%); balloon loans (89.4%); balloon payment share (38.2%)
Manufacturer breakdown	Volkswagen (48.3%); Audi (51.2%); Others (0.6%)	Volkswagen (46.5%); Audi (43.9%); Others (9.6%)	Volkswagen (49.0%); Audi (50.4%); Others (0.6%)	Volkswagen (50.1%); Audi (49.3%); Others (0.6%)	Volkswagen (51.2%); Audi (48.3%); Others (0.5%)	Volkswagen (54.6%); Audi (45.1%); Others (0.3%)	Volkswagen (51.8%); Audi (47.8%); Others (0.4%)

Table 1

**Attribute Data Of Receivables Pools (cont.)**

	Driver Japan twelve provisional entrusted pool (as of Nov. 10, 2022)	Driver Japan twelve mother pool (as of Oct. 31, 2022)	Driver Japan eleven entrusted pool (as of Feb. 10, 2022)	Driver Japan ten entrusted pool (as of Feb. 10, 2021)	Driver Japan nine entrusted pool (as of Feb. 10, 2020)	Driver Japan eight entrusted pool (as of Feb. 10, 2019)	Driver Japan seven entrusted pool (as of Feb. 10, 2018)
Type of loan products**	Owner's Plan (4.5%); Solutions (47.6%); S-Loan (43.7%); S-Loan Plus (0.0%); others (4.3%)	Owner's Plan (3.7%); Solutions (47.5%); S-Loan (46.3%); Plus (0.0%); others (2.4%)	Owner's Plan (3.9%); Solutions (49.7%); S-Loan (42.6%); S-Loan Plus (0.0%); others (3.8%)	Owner's Plan (3.8%); Solutions (50.3%); S-Loan (42.6%); S-Loan Plus (0.0%); others (3.4%)	Owner's Plan (5.5%); Solutions (48.8%); S-Loan (42.4%); S-Loan Plus (0.1%); others (3.2%)	Owner's Plan (6.5%); Solutions (45.9%); S-Loan (42.4%); S-Loan Plus (0.8%); others (4.4%)	Owner's Plan (7.3%); Solutions (40.2%); S-Loan (46.5%); S-Loan Plus (2.8%); others (3.2%)

\*The receivables balance of the mother pool is actual, while that of the provisional pool and final pool are discounted by the aforementioned discount rate. §SMBFCFS indicates SMBC Finance Service Co. Ltd. or former Cedyna Financial Corp. †Used includes refinanced loans. ‡We calculated the weighted-average interest rate using the interest rates applied in the auto loan agreements and the principal amounts of the discounted loans. The discounted weighted-average interest rate is slightly higher than this rate. \*\*Solutions includes Loans of Audi Future Drive.

Table 1 (continued)

**Attribute Data Of Receivables Pools**

	Driver Japan six entrusted pool (as of Feb. 10, 2017)	Driver Japan five entrusted pool (as of Feb. 10, 2016)	Driver Japan four entrusted pool (as of Feb. 10, 2015)	Driver Japan three entrusted pool (as of Feb. 10, 2014)	Driver Japan two entrusted pool (as of Feb. 10, 2013)	Driver Japan one entrusted pool (as of Dec. 10, 2011)
Country of origin	Japan	Japan	Japan	Japan	Japan	Japan
Total receivables (¥)*	64,171,706,472	64,176,234,995	34,225,000,579	32,086,508,758	30,270,523,940	27,322,416,961
No. of contracts	30,757	31,976	16,751	15,890	14,160	17,182
Guarantee providers§	SMBCFS (61.1%); JACCS (38.9%)	SMBCFS (62.0%); JACCS (38.0%)	SMBCFS (63.5%); JACCS (36.5%)	SMBCFS (65.8%); JACCS (34.2%)	SMBCFS (73.0%); JACCS (27.0%)	JACCS (100.0%)
Customer type	Retail (85.6%); Corporate (14.4%)	Retail (85.0%); Corporate (15.0%)	Retail (85.0%); Corporate (15.0%)	Retail (85.4%); Corporate (14.6%)	Retail (86.3%); Corporate (13.7%)	Retail (86.2%); Corporate (13.8%)
Vehicle type†	New (77.1%); Used (22.9%)	New (79.5%); Used (20.5%)	New (82.8%); Used (17.2%)	New (82.4%); Used (17.6%)	New (82.0%); Used (18.0%)	New (80.7%); Used (19.3%)
Geographic concentration	Tokyo (17.7%); Kanagawa (10.2%); Aichi (6.9%); Saitama (6.6%); Osaka (6.3%)	Tokyo (17.4%); Kanagawa (10.5%); Aichi (6.9%); Osaka (6.6%); Saitama (6.0%)	Tokyo (18.3%); Kanagawa (10.5%); Aichi (7.1%); Osaka (6.3%); Saitama (5.4%)	Tokyo (18.0%); Kanagawa (10.0%); Aichi (7.4%); Osaka (6.3%); Saitama (6.2%)	Tokyo (20.6%); Kanagawa (11.3%); Aichi (8.1%); Saitama (5.8%); Chiba (5.0%)	Osaka (15.9%); Fukuoka (9.8%); Hokkaido (6.4%); Hiroshima (4.9%); Nagano (4.7%)
Average outstanding receivables size (¥)*	2,086,410	2,007,013	2,043,162	2,019,289	2,137,749	1,590,177

Table 1 (continued)

**Attribute Data Of Receivables Pools (cont.)**

	Driver Japan six entrusted pool (as of Feb. 10, 2017)	Driver Japan five entrusted pool (as of Feb. 10, 2016)	Driver Japan four entrusted pool (as of Feb. 10, 2015)	Driver Japan three entrusted pool (as of Feb. 10, 2014)	Driver Japan two entrusted pool (as of Feb. 10, 2013)	Driver Japan one entrusted pool (as of Dec. 10, 2011)
Outstanding loan size range (¥)*	50,096 to 9,980,361	50,072 to 9,997,761	50,449 to 9,981,969	50,080 to 9,964,054	50,072 to 9,963,395	50,185 to 9,615,910
Weighted-average seasoning (months)	11.8	13.4	12.8	12.4	11.7	17.1
Weighted-average remaining term (months)	36.3	32.7	36.1	38.0	40.2	36.4
Weighted-average interest rate (%)	2.06‡	1.96‡	2.21‡	2.49‡	2.50‡	2.81‡
Asset redemption profile	Amortizing loans (13.6%); balloon loans (86.4%); balloon payment share (39.5%)	Amortizing loans (16.1%); balloon loans (83.9%); balloon payment share (41.0%)	Amortizing loans (21.5%); balloon loans (78.5%); balloon payment share (35.9%)	Amortizing loans (27.8%); balloon loans (72.2%); balloon payment share (32.3%)	Amortizing loans (27.9%); balloon loans (72.1%); balloon payment share (29.8%)	Amortizing loans (33.6%); balloon loans (66.4%)
Manufacturer breakdown	Volkswagen (51.6%); Audi (48.1%); Others (0.3%)	Volkswagen (51.5%); Audi (48.2%); Others (0.3%)	Volkswagen (49.6%); Audi (49.9%); Others (0.5%)	Volkswagen (52.6%); Audi (47.1%); Others (0.3%)	Volkswagen (53.2%); Audi (46.5%); Others (0.3%)	Volkswagen (59.5%); Audi (40.3%); Others (0.2%)
Type of loan products**	Owner's Plan (10.8%); Solutions (38.8%); S-Loan (44.2%); S-Loan Plus (3.4%); others (2.8%)	Owner's Plan (14.4%); Solutions (38.3%); S-Loan (41.5%); S-Loan Plus (4.1%); others (1.7%)	Owner's Plan (20.6%); Solutions (37.0%); S-Loan (37.2%); S-Loan Plus (4.3%); others (0.9%)	Owner's Plan (26.3%); Solutions (39.6%); S-Loan (29.2%); S-Loan Plus (3.4%); others (1.5%)	Owner's Plan (25.9%); Solutions (39.9%); S-Loan (29.2%); S-Loan Plus (3.0%); others (2.0%)	Owner's Plan (30.6%); Solutions (38.8%); S-Loan (24.0%); S-Loan Plus (3.6%); others (3.0%)

\*The receivables balance of the mother pool is actual, while that of the provisional pool and final pool are discounted by the aforementioned discount rate. §SMBCFS indicates SMBC Finance Service Co. Ltd. or former Cedyna Financial Corp. †Used includes refinanced loans. ‡We calculated the weighted-average interest rate using the interest rates applied in the auto loan agreements and the principal amounts of the discounted loans. The discounted weighted-average interest rate is slightly higher than this rate. \*\*Solutions includes Loans of Audi Future Drive.

Table 2

**Overview Of Securitized Loan Products**

Loan product	Description
Owner's plan	Equal monthly payments and no balloon payment; bonus payments allowed.
Solutions, etc.	Balloon payments and an option to have VWFSJ or the dealer guarantee the repurchase of the vehicle at a price equal to the balloon payment.
S-Loan, etc.	Balloon payments but no option to have VWFSJ or the dealer guarantee the vehicle repurchase at a price equal to the balloon payment.

Table 2

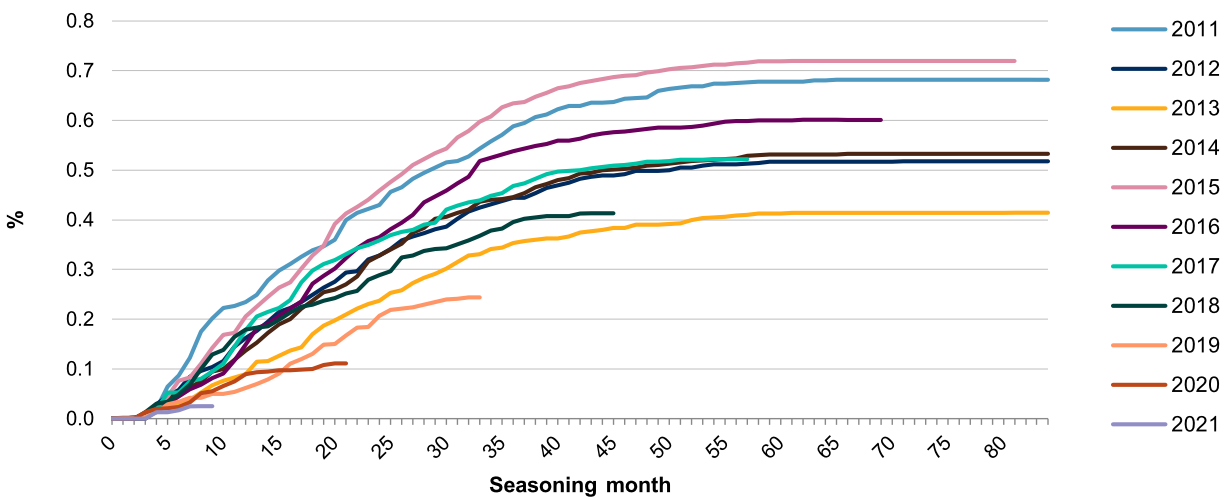
**Overview Of Securitized Loan Products (cont.)**

Loan product	Description
S-Loan Plus	Balloon payments and an option to sell the vehicle to the car dealer at a price previously agreed upon if the borrower buys a new Audi vehicle from that dealer.

Cumulative gross losses on the loans in the mother pool since the vintage year are shown below (see chart 2).

Chart 2

**Cumulative Gross Losses On Loans In Mother Pool Since Vintage Year**

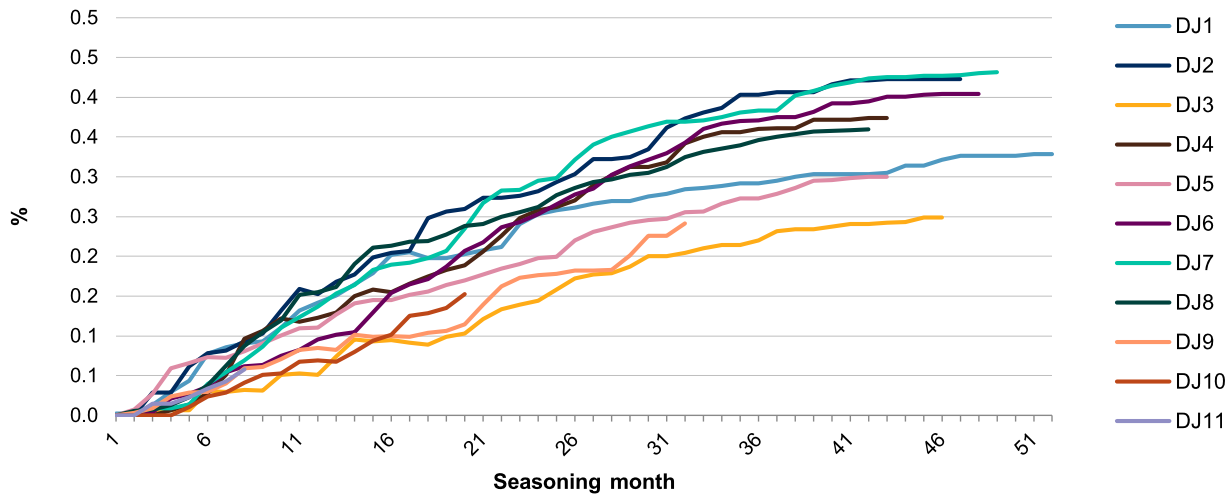


Source: S&P Global Ratings, based on issuer data.  
 Copyright © 2022 by Standard & Poor's Financial Services LLC. All rights reserved.

The cumulative gross loss ratio (see note) of the past series are shown below (see chart 3).

Chart 3

### Cumulative Gross Loss Ratio Of Previous Driver Japan Series



Source: S&P Global Ratings, based on issuer data.

Copyright © 2022 by Standard & Poor's Financial Services LLC. All rights reserved.

### Characteristics of the loan receivables

The entrusted loan receivables are from vehicle loan contracts that VWFSJ originated, using mainly Volkswagen and Audi dealers as agents.

The transaction securitizes some types of loans that contain balloon payments. Such loans have equal installments during the loan's life, except for the last installment (balloon payment), which is significantly higher than the regular installments. The final balloon payment for these loans is typically set to match or be lower than the estimated residual value of the car at loan maturity. Upon expiration, borrowers have the following three alternatives.

- Keep the vehicle or sell the vehicle to a third-party dealer such as a used car dealer, and pay the final installment in cash.
- Sell the vehicle to the car dealer. The dealer will settle the balloon payment on the borrower's behalf. The borrowers of "Solutions" loans can opt to have VWFSJ or the dealer guarantee the purchase at a price equal to the balloon payment. The borrowers of "S-Loan Plus" loans have an option to sell the vehicle to the car dealer at a price previously agreed upon if they buy a new Audi vehicle from that dealer (see table 2).
- Extend the loan or divide up the final scheduled payment of the loan, provided JACCS or SMBC Finance approves such an application from the borrower on behalf of VWFSJ.

In this transaction, trustee 1 will not accept extensions of auto loans. VWFSJ pays indemnity to trustee 1 regarding the receivables for which the borrowers exercised these options.

## Originator review

We held a meeting with VWFSJ, JACCS, and SMBC Finance to review their policies and procedures for loan origination, underwriting, and servicing.

**Origination/Underwriting.** VWFSJ has outsourced its auto loan operations--including credit and scoring, processing contract applications, and collections--to SMBC Finance (including former Cedyna) since 2002 and JACCS since 2007. VWFSJ determines to which company--JACCS or SMBC Finance--it outsources operations by area and dealer. There were 434 dealers, including 246 Volkswagen car dealers and 127 Audi car dealers, as of Oct. 31, 2022.

Each subservicer, on behalf of VWFSJ, originates the loan contracts via the Volkswagen group dealer network, and makes credit decisions centrally. The subservicers use almost the same criteria that apply to their own auto loans. Generally, they base their credit decisions on auto-scoring results and conduct additional their own underwriting if necessary.

As for loans with balloon payments, the subservicers evaluate whether a customer can repay the entire loan, including the balloon payment, without resorting to selling the car and using the proceeds to complete repayment of the loan. VWFSJ sets the amount of the balloon payment conservatively, based on its projection of the residual value. VWFSJ also considers the subservicers' projections. Currently, the limit on balloon payments is essentially 50% of the vehicle price at the time of purchase for two-year loans, 40% for three-year loans, 30% for four-year loans, and 20% for five-year loans. However, the prices differ by car type and VWFSJ occasionally offers prices slightly higher than the above limits for some car types as sales promotions.

VWFSJ monitors dealers periodically. VWFSJ uses the criteria that the Volkswagen group uses globally, and checks dealers' financial information as well as their flow of inventory. If a subservicer finds that a dealer failed to comply with relevant laws while confirming a borrower's plans, the subservicer will report this to VWFSJ.

**Servicing.** The subservicers will collect payments on behalf of VWFSJ through automatic withdrawal from the obligors' accounts each month. Each subservicer, as a guarantor, will transfer the full amount of the scheduled collected proceeds--regardless of the amount of actual collected proceeds--to VWFSJ on the same day. The subservicers acquire overdue loans from VWFSJ after payment in subrogation. They service them through JACCS's contact center and SMBC Finance's control center.

## Credit Analysis Of Underlying Collateral

### Performance outlook for Japanese auto loan receivables

We expect the performance of consumer receivables backing ABS transactions to be stable in 2023. Transactions are backed by auto loan receivables, shopping credit receivables, credit card receivables (shopping and cashing receivables), and consumer loan receivables.

The unemployment rate is a key factor that could affect the creditworthiness of obligors of auto loans backing ABS transactions we rate. We forecast an unemployment rate of 2.5% for 2023, a decline of 0.1 percentage point from the previous year. We therefore think it somewhat unlikely a deterioration of obligors' performance, including through delinquencies and defaults, would be

driven by unemployment.

Meanwhile, macroeconomic factors can also impact the creditworthiness of obligors, and consequently transactions. In particular, an increase in geopolitical risk and changes in the economic environment, such as consumer price inflation and a sharp depreciation of the yen, have affected the Japanese economy in 2022. We believe such uncertainties will endure in 2023.

Auto loan obligors will have to spend more given price rises for gas and daily necessities. Consumer prices are rising at a slower pace in Japan than in many major countries overseas. However, limited growth in wages means obligors are still feeling the effects of the Japan's inflation. Accordingly, obligors face a challenging environment, in our view. Having said that, we do not expect inflationary pressures to have a direct impact on obligors' delinquencies and defaults. This is because we consider Japan's inflation transitory, and because monthly repayments of auto loans are in the tens of thousands of yen (hundreds of dollars) range, in general.

As for the used-car market, which affects performance of auto loan ABS transactions, we see three factors at play. The first two are shortages: of semiconductors and auto parts. In addition, a decrease in new car sales caused by suspension of operation at factories under the pandemic is having an effect. The supply of used cars is still short, and prices of used cars traded at auctions have been rising. In addition, overseas dealers have been able to purchase used cars at relatively low prices in Japan thanks to the weak yen. Under these circumstances, demand for used cars has been growing. In 2023, we expect the demand for used cars to remain high, even though certain changes could happen. The performance of underlying loans is likely to be supported by possible sales of automobiles by obligors to repay loans when they face financial difficulties.

## Assessment of the credit quality of the underlying assets

We examined surveillance data on the past series and the following data that VWFSJ provided:

- Monthly static and dynamic data on gross losses, early terminations (prepayments), and cancellations from the mother pool (from January 2012 to October 2022); and
- Attribute data of the provisional entrusted pool as of Nov. 10, 2022.

We assessed the major factors that will affect the credit quality of the underlying assets of this transaction. We did so based on a comprehensive analysis of trends in the auto loan sector and economic trends in Japan.

## Cumulative default rate

The transaction defines the default rate as either the amount of receivables on which obligors have failed to make monthly installment payments for three consecutive months, or in relation to which the unpaid balance can be declared immediately due and payable because of the occurrence of events of default prescribed in the auto loan agreement.

Under this transaction, upon the entrustment of an auto loan the originator will transfer its withheld ownership of the relevant purchased vehicle to trustee 1. However, the withheld ownership will not be registered in trustee 1's name. We base our calculation of the default rates on the total amount of defaulted receivables, and do not incorporate recoveries, including proceeds from vehicle sales and other recovery sources, or guarantees that JACCS and SMBC Finance provide.

For the cumulative default rate under the base scenario, we arrived at 0.8% of the total initial

principal amount of the receivables. In addition, we arrived at a cumulative default rate of 4.0% under our stress scenario commensurate with a 'AAA' rating. A higher multiple (5x the average cumulative default rate assumption under the base scenario) resulted from a low cumulative default rate under our base scenario, which is set at less than 1.0%.

The default rate of the mother pool has been relatively stable (see chart 2). According to this chart, cumulative defaults of the mother pool's 2012 to 2019 loan vintages range within about 0.4%-0.7%. Vintages after 2019 show slightly lower rates compared with older vintages.

Compared with the mother pool, the provisional entrusted pool are characterized by: 1) higher shares of used vehicles, 2) shorter seasoning periods and longer residual periods, 3) smaller shares of corporate obligors, and 4) lower shares of balloon loans. However, these differences are only limited and will not cause a material differences in default rates between the mother pool and the provisional entrusted pool, in our view.

The performance of the past series have been relatively stable (see chart 3). We believe the credit quality of the obligors in this asset pool is relatively high compared with those of typical auto loans underlying auto loan ABS transactions in Japan. We base this on our consideration that: 1) the prices of Volkswagen and Audi vehicles are somewhat higher than those of domestic car manufacturers' vehicles, and 2) the fact new vehicles make up about 70% of the asset pool. The historical default rate, which has remained low, underpins our view.

We also believe the macroeconomic environment for obligors will remain unclear from 2023 on. As mentioned above, obligors in this transaction have relatively higher creditworthiness than standard in the market. Impacts from changes in the macroeconomic environment should therefore be limited. However, higher prices, including for gas, can be a negative factor for the future creditworthiness of obligors. We reflect such negative factors when deciding default rates.

Although VWFSJ is a captive finance company of Volkswagen AG group, and its credit policy may be influenced by the change of the group's sales policy, JACCS and SMBC Finance's control of VWFSJ's credit policy as guarantors mitigates the risk that the manufacturer's business policy could constrain the policy.

## Balloon payments

We take into account risk from the loans with balloon payments based on VWFSJ's historical data. This data shows only limited defaults on balloon payments. However, under our 'AAA' stress scenario we assume that borrowers must repay the debt in full only with cash at the same time as the vehicles' market values decline significantly in the two sets of circumstances below.

- When the originator and/or dealers become unable to repurchase vehicles; or
- When the originator becomes unable to provide refinancing loans.

We assume that 7% of the amount of balloon payments will default in our 'AAA' stress scenario. This is 1.75x higher than the 'AAA' cumulative default rate of 4.0% that we assume for the loans without balloon payments.

We view the credit quality of the obligors in this asset pool as relatively high compared with typical auto loans in the Japanese auto loan ABS deals. In addition, borrowers may be able to repay their debt by selling the relevant vehicles. VWFSJ's conservative credit policy for balloon payments, as well as the diversification of maturities, mitigates the risk of a decline in market value.

Although we don't assume recovery from the vehicles, we would expect borrowers to be able to sell their vehicles independently. In this transaction, there is a revolving period for one year in which



VWFSJ can entrust additional receivables. In establishing a stress scenario commensurate with our 'AAA' rating, we incorporate the possibility that an increase in the share of balloon payments leads to deterioration of creditworthiness of portfolio. However, additional entrustments heighten subordination and thus credit support.

## Prepayment rate

Dynamic data of the mother pool that VWFSJ provided indicates a monthly prepayment rate of about 1.0% of the receivables' outstanding balance at the end of the previous month.

For the prepayment rate under the base scenario, we assumed 1.0% monthly. In addition, under our 'AAA' stress scenario, we arrived at a prepayment rate of 0.05% at minimum and 3.0% at maximum monthly.

## Cancellations

Under this transaction, VWFSJ has to repurchase cancelled receivables. However, VWFSJ would be unable to fulfill its obligations with respect to repurchases if it were to go bankrupt. Because payments on the cancelled receivables would stop as a result of VWFSJ's bankruptcy, causing a temporary disruption of cash flow to the transaction, cancellations would impair the performance of the transaction. Generally, apart from cancellations that occur immediately after the origination of loan agreements, the number of cancellations of auto loan receivables is limited. In fact, the data shows actual cancellations are concentrated immediately after the origination of loan agreements, and the cancelled amount is limited. In addition, under this transaction, entrusted receivables fulfill the eligibility criterion of at least two monthly payments made. We regard the risk of cancellation in the receivables pool as low.

## Cash Flow Analysis

We conducted cash flow analysis on multiple scenarios, which are based on the projected cash flow provided by the originator and applied stresses to various parameters, including cumulative default rate and prepayment rate, commensurate with ratings (see table 3).

Regarding the cumulative default rate, we assume all defaults would occur as assumed during 24 months. We also assume three different patterns of default timing (frontloaded, standard and backloaded).

As a result, we confirmed the following regarding beneficial interests 2 and ABL 2 under the stress scenario commensurate with a 'AAA' rating:

- Interest payments will be made in full without delay.
- Principal payments will be made in full by the final legal maturity date in June 2031.

In conducting analysis, we consider benefits from the nonamortizing cash reserve, which serves primarily as liquidity support and ultimately as credit support. To determine the effect of pro rata amortization, when modeling the cash flow, we take into account the performance triggers, the subordination level during the revolving period, and the patterns of defaults in past transactions.

Table 3

**Assumed Scenarios And Break-Even Overcollateralization Level**

(%)	Base scenario	'AAA' stress scenario
Cumulative default rate	0.8	4.0
Losses on balloon payments	0.0	7.0
Monthly prepayment rate	1.0	0.05 to 3.0
Cumulative default rate considering losses on balloon payments	0.8	6.9
Excess spread	-	0.9
Breakeven overcollateralization level	-	6.0

**Scenario Analysis**

We formulated scenarios for the underlying assets relating to this transaction, assuming a set of circumstances. Specifically, in our scenario analysis, we assumed that the performance of the underlying assets would diverge from the assumptions under our base scenario and examined how this would affect the transaction.

**Setting scenarios and assumptions**

In our opinion, the cumulative default rate is the parameter that most affects the ratings on ABS transactions backed by auto loan receivables. Specifically, we set two scenarios in which default rates are higher than the assumption we made under our base scenario (see table 4).

Table 4

**Assumptions Of Scenario Analysis**

(%)	Scenario 1	Scenario 2
Cumulative default rate	1.0 (1.25x base-case assumption)	1.2 (1.5x base-case assumption)

**Results of the scenario analysis**

Our rating is 'AA+' under a scenario where the cumulative default rate is 1.0% (1.25x the cumulative default rate assumption under our base scenario). Our rating is 'AA' under a scenario where the cumulative default rate is 1.2% (1.5x the cumulative default rate assumption under our base scenario).

This analysis is based on an assumption that all assumptions for performance of underlying assets, except for the abovementioned cumulative default rates, remain unchanged after the initial rating. Even if the cumulative default rate develops as we assume in the scenario, the actual ratings may not be changed in line with the results of this analysis. This is because we determine the ratings from a comprehensive perspective, incorporating various factors in addition to those considered in this analysis.

## Structural Analysis

### Servicing risk and liquidity risk

VWFSJ acts as the transaction's servicer and JACCS and SMBC Finance as its subservicers. We conducted an operational review meeting with VWFSJ, JACCS, and SMBC Finance. We asked them about various issues, including their organizational structures as servicers/subservicers, their methods for managing receivables, and their system development. We believe that they have sufficient capability to fulfill their respective roles in this transaction.

VWFSJ could be discharged from its servicing activities in the event of certain credit events involving the company. Choosing a new servicer and entrusting servicing operations with that company may be a time-consuming process, and may result in a temporary disruption of collections from the receivables pool. This would, in turn, impair the performance of the transaction. In this transaction, a backup servicer will not be appointed at the closing date. In the event that certain credit events in trust agreements occur, trustee 1 will appoint a backup servicer and, in certain cases, have that backup servicer take over servicing operations from the initial servicer. This structure mitigates the risk of servicing activities being disrupted for an extended period.

In addition, this transaction will benefit from a cash reserve sufficient to cover four months' worth of interest payments and transaction expenses, to be funded at the transaction's closing.

### Commingling risk

There is a risk that collected funds may not be transferred (maximum: one month's worth of collection proceeds) because of commingling if VWFSJ defaults. In this transaction, advance payment collections by VWFSJ mitigate this commingling risk. Overcollateralization also mitigates commingling risk.

### Counterparty risk

A collection account is to be established in the name of trustee 2 at MUFG Bank. In the future, if the rating on the bank is lowered and the bank loses its status as a qualified bank (under the transaction documents, qualified banks have a short-term credit rating of 'A-1' or above), the collection account will be transferred within 30 days to a bank that satisfies the above criteria.

### Legal Risk

Because the securitized asset pool of this transaction contains balloon auto loans, in our analysis, we considered the typical characteristics and contract structure of balloon auto loans and other relevant factors. Based on our understanding of the above characteristics and contract structure, we then considered whether installment or balloon payments of auto loans can be impaired as a result of any adverse factors, such as the cancellation of a borrower's obligation to make such payments when the originator or a car dealer that provided the borrower with a buyback guarantee enters into insolvency proceedings.

We analyzed whether a borrower's obligation to make the installment or balloon payments would be cancelled through trustee 1's termination of the auto loan agreement by treating it as an

executory bilateral contract when the originator--which guarantees to buy the vehicle back from the borrower after the borrower's completion of installment payments--becomes subject to insolvency proceedings before the originator and the borrower complete the performance of their respective obligations in relation to such a buyback guarantee. When the borrower exercises the option to have the originator buy back the vehicle, the originator is obligated to pay to the borrower the buyback price following such buyback and the borrower is obligated to hand over the vehicle to the originator. We note that: (1) such obligations of the originator and borrower arise based on the sale and purchase agreement, which is separate from the auto loan agreement; (2) the linkage between the originator's payment to meet the obligation to buy back the vehicle and the borrower's obligation to make the installment payments under the auto loan agreement is weak; and (3) the originator's payment to buy back the vehicle cannot be deemed as consideration for the borrower's installment payments. Therefore, there seems to be a low likelihood that the auto loan agreement would be terminated as a result of the originator's insolvency because the trustee treated the agreement as an executory bilateral contract.

In addition, we analyzed whether the borrower would be able to assert a payment suspension claim under the Installment Sales Act. When the originator or a car dealer that provides the borrower with the buyback guarantee enters into insolvency proceedings, there is a possibility that the insolvency trustee will deem the sale and purchase agreement as an executory bilateral contract, will terminate the sale and purchase agreement, and will not pay the buyback price for the vehicle under the sale and purchase agreement. However, the application of the buyback price to the balloon payment is only one of the options the borrower has to make the balloon payment. It would be unfair if the borrower became entitled to refuse to make the balloon payment simply because the borrower was prevented from exercising the option to use the buyback price. The insolvency trustee is also lawfully entitled to terminate the sale and purchase agreement under insolvency laws, and its failure to pay the buyback price as a result of its termination of the sale and purchase agreement would not constitute a default of the buyback guarantee. Therefore, there seems to be little possibility that the borrower would be able to refuse to make the installment payments or the balloon payment by asserting the payment suspension claim.

## **Surveillance**

We will analyze regular servicer reports detailing the performance of the underlying collateral, monitor supporting ratings, and make regular contact with the servicer to ensure that it maintains minimum servicing standards and that any material changes in its operations are communicated and assessed.

The key performance indicators in the surveillance of this transaction are:

- Increases in credit enhancement for the obligations;
- Default rates;
- Delinquency rates; and
- Prepayment rates.

## **Note**

The cumulative gross loss ratio is calculated as follows:

- The numerator is the sum of the discounted principal balance of all auto loan receivables that have defaulted from the initial cut-off date through to the end of the monthly period

immediately preceding the relevant trust calculation date.

- The denominator is the sum of: (1) the aggregate discounted principal balance of the initial auto loan receivables as of the initial cut-off date, and (2) the aggregate discounted principal balance of all additional auto loan receivables (if any) entrusted as of the additional entrustment dates that occur within six months prior to the relevant trust calculation date.

## **Related Criteria**

- Global Auto ABS Methodology And Assumptions, Mar 31, 2022
- Environmental, Social, And Governance Principles In Credit Ratings, Oct. 10, 2021
- Global Framework For Payment Structure And Cash Flow Analysis Of Structured Finance Securities, Dec. 22, 2020
- Counterparty Risk Framework: Methodology And Assumptions, March, 8, 2019
- Incorporating Sovereign Risk In Rating Structured Finance Securities: Methodology And Assumptions, Jan. 30, 2019
- Global Framework For Assessing Operational Risk In Structured Finance Transactions, Oct. 9, 2014
- Principles Of Credit Ratings, Feb. 16, 2011
- Methodology For Servicer Risk Assessment, May 28, 2009

## **Related Research**

- ESG Industry Report Card: Auto Asset-Backed Securities, March 31, 2021
- Japanese Structured Finance Scenario And Sensitivity Analysis 2017: The Effects Of The Top Five Macroeconomic Factors, Dec. 26, 2017
- Global Structured Finance Scenario And Sensitivity Analysis 2016: The Effects Of The Top Five Macroeconomic Factors, Dec. 16, 2016

Copyright © 2023 by Standard & Poor's Financial Services LLC. All rights reserved.

No content (including ratings, credit-related analyses and data, valuations, model, software or other application or output therefrom) or any part thereof (Content) may be modified, reverse engineered, reproduced or distributed in any form by any means, or stored in a database or retrieval system, without the prior written permission of Standard & Poor's Financial Services LLC or its affiliates (collectively, S&P). The Content shall not be used for any unlawful or unauthorized purposes. S&P and any third-party providers, as well as their directors, officers, shareholders, employees or agents (collectively S&P Parties) do not guarantee the accuracy, completeness, timeliness or availability of the Content. S&P Parties are not responsible for any errors or omissions (negligent or otherwise), regardless of the cause, for the results obtained from the use of the Content, or for the security or maintenance of any data input by the user. The Content is provided on an "as is" basis. S&P PARTIES DISCLAIM ANY AND ALL EXPRESS OR IMPLIED WARRANTIES, INCLUDING, BUT NOT LIMITED TO, ANY WARRANTIES OF MERCHANTABILITY OR FITNESS FOR A PARTICULAR PURPOSE OR USE, FREEDOM FROM BUGS, SOFTWARE ERRORS OR DEFECTS, THAT THE CONTENT'S FUNCTIONING WILL BE UNINTERRUPTED OR THAT THE CONTENT WILL OPERATE WITH ANY SOFTWARE OR HARDWARE CONFIGURATION. In no event shall S&P Parties be liable to any party for any direct, indirect, incidental, exemplary, compensatory, punitive, special or consequential damages, costs, expenses, legal fees, or losses (including, without limitation, lost income or lost profits and opportunity costs or losses caused by negligence) in connection with any use of the Content even if advised of the possibility of such damages.

Credit-related and other analyses, including ratings, and statements in the Content are statements of opinion as of the date they are expressed and not statements of fact. S&P's opinions, analyses and rating acknowledgment decisions (described below) are not recommendations to purchase, hold, or sell any securities or to make any investment decisions, and do not address the suitability of any security. S&P assumes no obligation to update the Content following publication in any form or format. The Content should not be relied on and is not a substitute for the skill, judgment and experience of the user, its management, employees, advisors and/or clients when making investment and other business decisions. S&P does not act as a fiduciary or an investment advisor except where registered as such. While S&P has obtained information from sources it believes to be reliable, S&P does not perform an audit and undertakes no duty of due diligence or independent verification of any information it receives. Rating-related publications may be published for a variety of reasons that are not necessarily dependent on action by rating committees, including, but not limited to, the publication of a periodic update on a credit rating and related analyses.

To the extent that regulatory authorities allow a rating agency to acknowledge in one jurisdiction a rating issued in another jurisdiction for certain regulatory purposes, S&P reserves the right to assign, withdraw or suspend such acknowledgment at any time and in its sole discretion. S&P Parties disclaim any duty whatsoever arising out of the assignment, withdrawal or suspension of an acknowledgment as well as any liability for any damage alleged to have been suffered on account thereof.

S&P keeps certain activities of its business units separate from each other in order to preserve the independence and objectivity of their respective activities. As a result, certain business units of S&P may have information that is not available to other S&P business units. S&P has established policies and procedures to maintain the confidentiality of certain non-public information received in connection with each analytical process.

S&P may receive compensation for its ratings and certain analyses, normally from issuers or underwriters of securities or from obligors. S&P reserves the right to disseminate its opinions and analyses. S&P's public ratings and analyses are made available on its Web sites, [www.standardandpoors.com](http://www.standardandpoors.com) (free of charge), and [www.ratingsdirect.com](http://www.ratingsdirect.com) (subscription), and may be distributed through other means, including via S&P publications and third-party redistributors. Additional information about our ratings fees is available at [www.standardandpoors.com/usratingsfees](http://www.standardandpoors.com/usratingsfees).

STANDARD & POOR'S, S&P and RATINGSDIRECT are registered trademarks of Standard & Poor's Financial Services LLC.